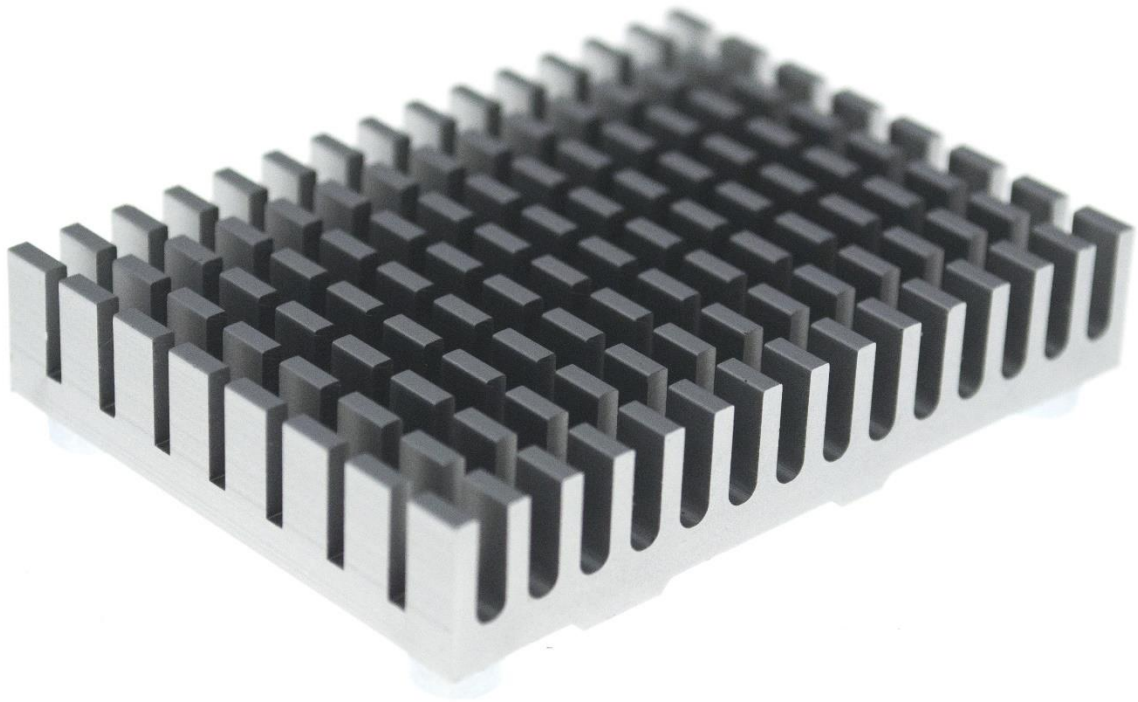


# CM4 Cooler for Raspberry Pi Compute Module 4

## Product Brief

2021-1-4

EDA TECHNOLOGY CO.,LTD



---

## CM4 Cooler Product Brief

CM4 Cooler is a heatsink specially designed for Raspberry Pi Compute Module 4.

Due to the higher performance of Compute Module 4, its power consumption gets higher than Compute Module 3+. The temperature of CPU is close to the temperature limit-85°C when the environment temperature is 25°C and CPU is fully loaded. Besides that, PMU and Wireless Module (CM4 with wireless function) are also very hot. Three thermal-conductive pads are attached on the back of CM4 Cooler to ensure CM4 Cooler closely attached with the CPU, Wireless Module and PMU on the Compute Module 4. The heat of these three components is dissipated by CM4 Cooler through the three thermal-conductive pads.

There are four nylon washers packed with CM4 Cooler, 1.5mm height & 3mm height optional for 1.5mm and 3mm height 100pin board to board connector. They are used to support Compute Module 4 and avoid the damage of board-to-board connector or deformation of Compute Module 4 when the screws are used to fix CM4 Cooler on the Compute Module 4. There's no need to solder the stand-off that secures the Compute Module 4 on the PCB when customers design their own baseboard, which saves money.

CM4 Cooler can reduce the temperature of Compute Module 4 by maximal 20°C when the room temperature is 25°C and CPU & DDR memory are fully

loaded. The actual heat dissipation performance will be variable according to temperature difference between the environment and Compute Module 4. Please check CM4 Cooler cooling performance testing report for more details.

CM4 Cooler is available in black and silver. It also supports full series of Compute Module 4 including Wireless version.

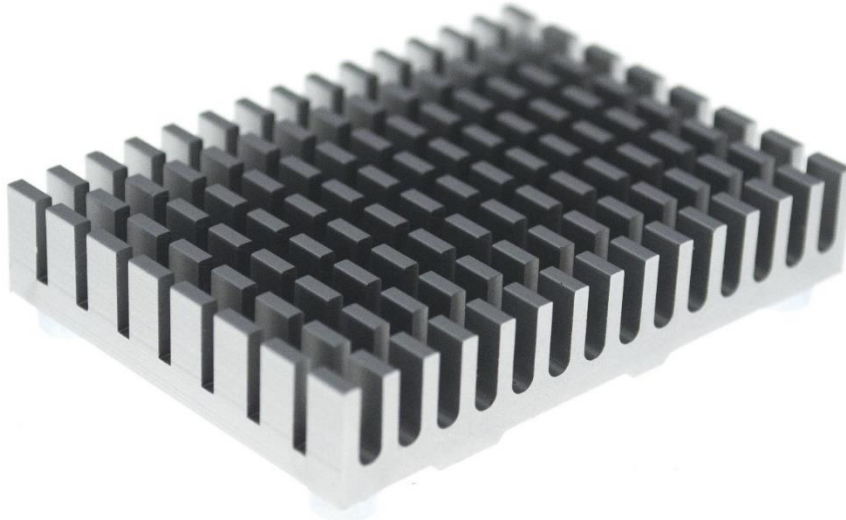
### **Main Parameters:**

- Size: 55\*40\*13.5mm
- Weight: 40g
- Color: black and silver (optional)
- Nylon washers: 1.5mm and 3mm height (optional)

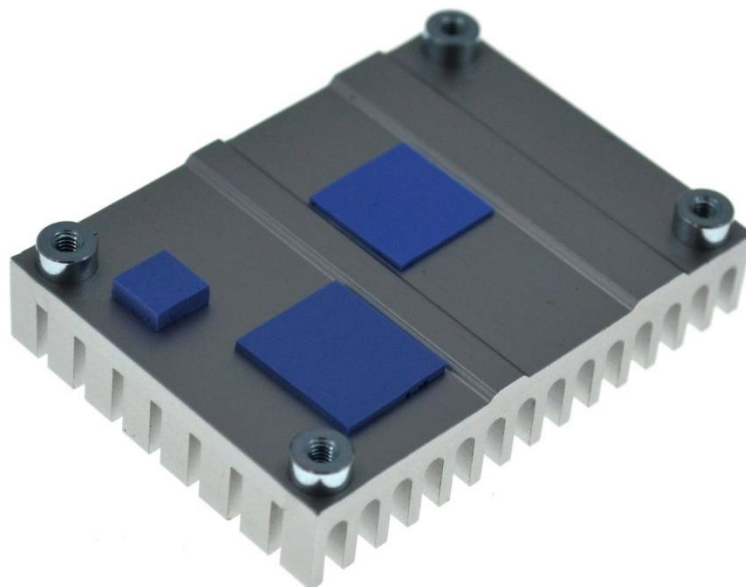
### **Technical Documents:**

- Assembling Guide of CM4 Cooler

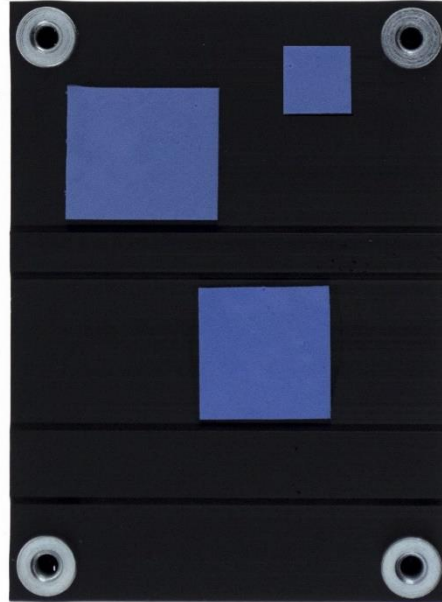
**Product Images:**



Front View of CM4 Cooler (Silver)



The Back View of CM4 Cooler (Silver)



The Back View of CM4 Cooler (Black)