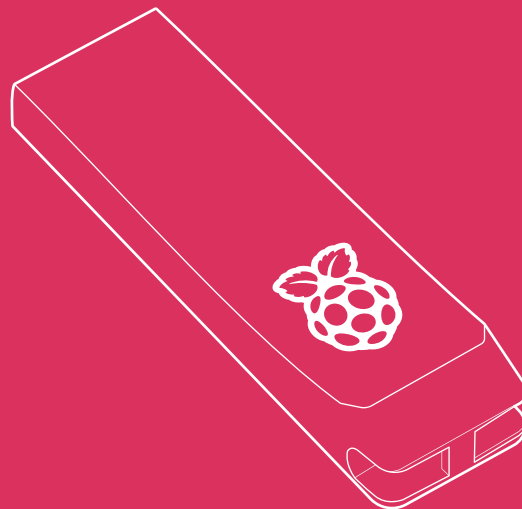




# Raspberry Pi Flash Drive

Published January 2026



## Overview



The Raspberry Pi Flash Drive is a compact, high-quality USB 3.0 flash memory drive that delivers powerful random and sequential input/output (I/O) performance in a sleek and portable form factor. Offering modest power consumption and robust resilience to power-loss events, the Raspberry Pi Flash Drive is a reliable companion for any Raspberry Pi or other compatible device. It is ideal for storing, transferring, and backing up data, and for installing and booting operating systems.

Optimised for use with all Raspberry Pi computers, the Raspberry Pi Flash Drive is available in 128GB and 256GB capacities, providing sequential write speeds of up to 75MB/s and 150MB/s respectively.<sup>1</sup>

---

<sup>1</sup> As tested on Raspberry Pi 5. Performance may vary on Raspberry Pi 4 and earlier devices.

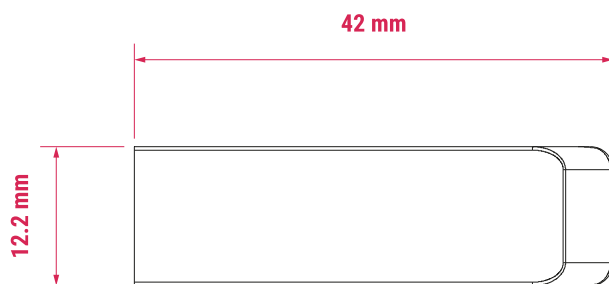
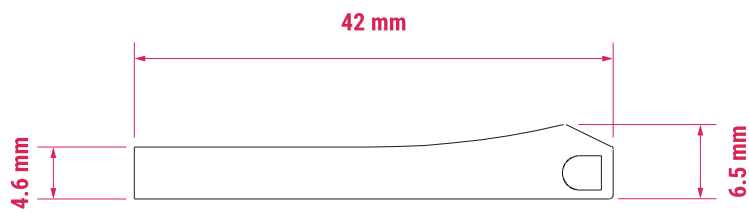
## Specification

<b>Features:</b>	<b>128GB</b>	16k IOPS <sup>2</sup> (4kB random reads) 21k IOPS (4kB random writes) 75MB/s sequential write speed (sustained)
	<b>256GB</b>	18k IOPS (4kB random reads) 22k IOPS (4kB random writes) 150MB/s sequential write speed (sustained)
		USB 3.0 Gen 1×1 interface with Type-A connector USB Attached SCSI Protocol with fallback to USB Mass Storage USB 3.0 U1/U2 idle power-saving support SMART drive health reporting
<b>Operating voltage:</b>		5V DC
<b>Operating temperature:</b>		0°C to 70°C
<b>Storage temperature:</b>		−25°C to 85°C
<b>Production lifetime:</b>		The Raspberry Pi Flash Drive will remain in production until at least January 2030
<b>Compliance:</b>		For a full list of local and regional product approvals, please visit <a href="http://pip.raspberrypi.com">pip.raspberrypi.com</a>
<b>List price:</b>	128GB	<b>\$30</b>
	256GB	<b>\$55</b>

---

<sup>2</sup> I/O operations per second.

## Physical specification



### Note:

All dimensions in mm

All dimensions are approximate and for reference purposes only. The dimension shown should not be used for producing production data

The dimensions are subject to part and manufacturing tolerances

Dimensions may be subject to change

## Safety warnings

**To avoid malfunction or damage to this product, please observe the following:**

- The USB drive is designed to be hot-pluggable. Ensure it is ejected by the operating system before physical removal.
- The connection of a Raspberry Pi Flash Drive to incompatible devices may affect compliance, result in damage to the unit, and invalidate the warranty.
- Do not expose to water or moisture, or place on a conductive surface whilst in operation.
- Ensure the Raspberry Pi Flash Drive is operated in free circulating air.
- Take care whilst handling to avoid mechanical or electrical damage to the connector.





**Raspberry Pi**

Raspberry Pi is a trademark of Raspberry Pi Ltd